

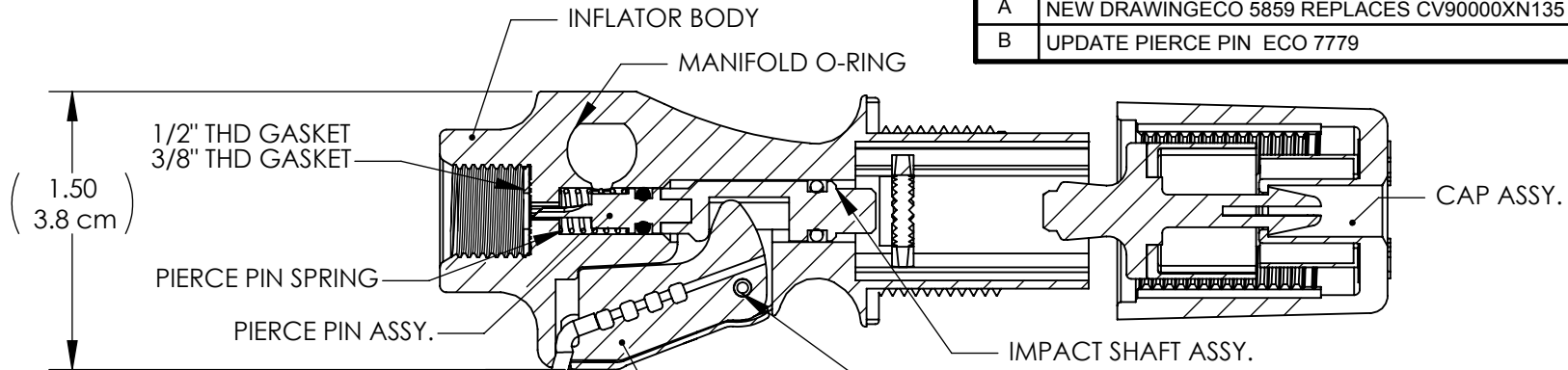
DRAWING NO.
CV90000XN135B

REV
B

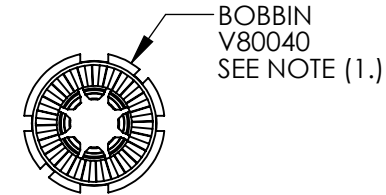
Customer Drawing

REVISION HISTORY

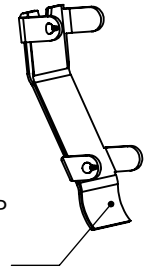
| REV | DESCRIPTION (ECO) | DATE | APPROVED |
|-----|--|----------|----------|
| A | NEW DRAWING ECO 5859 REPLACES CV90000XN135 | 10/10/13 | AK |
| B | UPDATE PIERCE PIN ECO 7779 | 12/11/17 | SR |



(13.5±0.25)
34.3 cm)



INDICATOR CLIP
V90124
SEE NOTE (1.)




REARMING INSTRUCTION
V90000LABS2
SEE NOTE (1.)

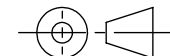
JACKET LABEL
V90000LABS1F
SEE NOTE (1.)

| | | |
|----------|----------|--------------|
| TOOLING: | PART NO. | IFU: |
| ---- | ---- | IFU -V80040B |

1. INDICATOR CLIP, BOBBIN, AND LABELS PACKED SEPARATELY.
2. FIRST SUFFIX "X" INDICATES THREAD TYPE:
NONE - 1/2"
S - 3/8"
3. CRITICAL DIMENSIONS ARE CIRCLED AND SUBJECT TO INSPECTION.
4. DIMENSIONS IN PARENTHESES ARE FOR REFERENCE ONLY.
5. ALL DIMENSIONS ARE IN INCHES WITH THE NOMINAL DIMENSION IN METRIC BELOW.

MOLDED PARTS:
GATES, PARTING LINES, AND FLASH PER QUALITY CRITERIA
PROPRIETARY AND CONFIDENTIAL
THE INFORMATION CONTAINED IN THIS DRAWING IS SOLE PROPERTY OF HALKEY-ROBERTS CORPORATION ST. PETERSBURG, FL. ANY REPRODUCTION IN PART OR AS A WHOLE WITHOUT THE WRITTEN PERMISSION OF HALKEY-ROBERTS CORPORATION IS PROHIBITED.

| | | | |
|---|-----|--|----------|
| DRAWN BY | DMC | DATE | 10/10/13 |
| APPROVED BY | | DATE | |
| MATERIAL | | | |
| FINISH | | | |
| UNLESS OTHERWISE SPECIFIED: DIMENSIONS ARE IN INCHES TOLERANCES: ANGULAR: ± 1° TWO PLACE DECIMAL ± .01 THREE PLACE DECIMAL ± .005 | | THIRD ANGLE PROJECTION  | |



HR® Halkey-Roberts®

| | | | |
|-------|-----|----------------------|---------------|
| TITLE | | ALPHA INFLATOR | |
| SIZE | A | DRAWING NO. | CV90000XN135B |
| SCALE | 1:1 | DO NOT SCALE DRAWING | SHEET 1 OF 1 |